



Product Data Sheet: RF 36

PRODUCT DESCRIPTION

RF 36 is a rigid molded *Non-Asbestos* friction material suitable for use in *Medium Friction* brake/clutch applications in a wide variety of equipment such as agricultural equipment, overhead cranes and heavy duty equipment. RF 36 is non-corrosive, non-abrasive, smooth, quiet and kind to mating surface. RF 36 can be molded into wide range of shapes and sizes to satisfy virtually all industrial applications.

CHARACTERISTICS

- Exceptional dimensional stability
- High compression strength
- Excellent corrosion resistance
- High Compressibility
- Excellent wear rate.

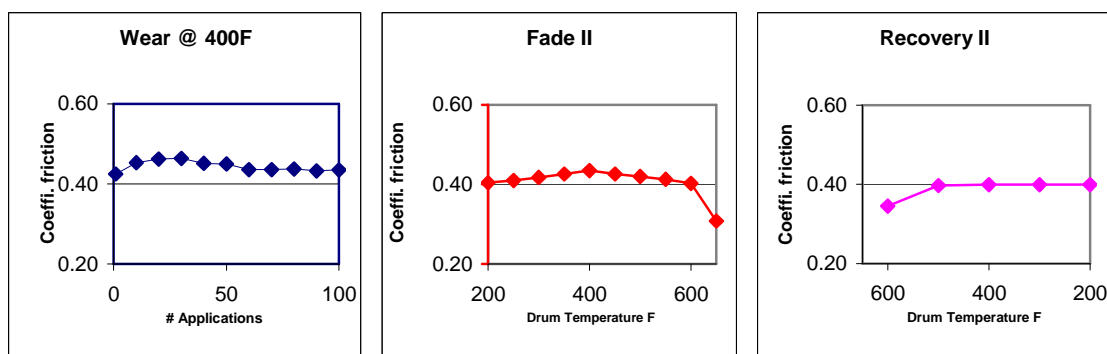
MECHANICAL PROPERTIES

Specific Gravity (SAE J380) : 2.0- 2.25
 Gogan Hardness (SAE J379A) : 20-40
 Tensile Strength, PSI (ASTM D638) : 3500_{min}

FRICTIONAL PROPERTIES

Coefficient of Friction (SAE J661):
 Normal* : 0.42
 Hot* : 0.40
 Wear Rate (SAE J661)
 (inch³/hp-hr) : 0.003_{max}
 Friction Code : FF
 Maximum Operating Limits:
 Rubbing Speed** : 10000 fpm
 Pressure** : 2000 psi
 Drum Temperature for
 Constant Operation** : 650°F

SAE J661A TEST CURVES



*Note 1. – Friction values shown are for guide purposes only since values deviate with changes in temperature, pressure and speed. Practical design should include a 25 to 50 percent safety factor.

**Note 2. – Rubbing speed, drum temperature, and pressure are directly related. Changing any one value will change the others. The values shown represent typical conditions, but are not the ultimate limits of the material.