



## Product Data Sheet: RF 43

### PRODUCT DESCRIPTION:

RF 43 is a rigid molded *Non-Asbestos, Metallic, graphitic* friction material suitable for use in *Medium Friction* brake/clutch applications in a wide variety of equipments. RF 43 is non-corrosive, smooth, non-abrasive and keeps the interface temperatures down on brakes. It can be molded into wide range of shapes and sizes to satisfy virtually all industrial applications.

### CHARACTERISTICS

- High compressibility
- Uniform friction
- Excellent fade & recovery
- Excellent wear rate

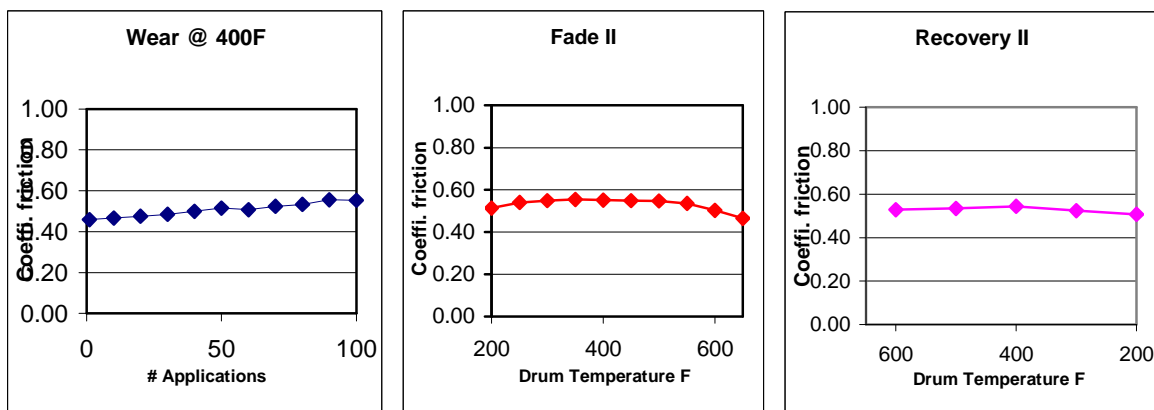
### MECHANICAL PROPERTIES

Specific Gravity (SAE J380) : 1.70  
Shore Hardness (SAE J379A) : 45-55

### FRICITIONAL PROPERTIES

Coefficient of Friction (SAE J661):  
Normal\* : 0.54  
Hot\* : 0.51  
Wear Rate (SAE J661)  
(inch<sup>3</sup>/hp-hr) : 0.003<sub>max</sub>  
Friction Code : GG  
Maximum Operating Limits:  
Rubbing Speed\*\* : 7500 fpm  
Pressure\*\* : 1000 psi  
Drum Temperature for  
Constant Operation\*\* : 500°F

### SAE J661A TEST CURVES



\*Note 1. – Friction values shown are for guide purposes only since values deviate with changes in temperature, pressure and speed. Practical design should include a 25 to 50 percent safety factor.

\*\*Note 2. – Rubbing speed, drum temperature, and pressure are directly related. Changing any one value will change the others. The values shown represent typical conditions, but are not the ultimate limits of the material.