

Product Data Sheet: RF 1005

PRODUCT DESCRIPTION

RF 1005 is a *Non-Asbestos, Non-Metallic, Medium friction* rigid molded material. The product has exceptional dimensional stability and can be molded into many intricate internal, external, and customer specified shapes. It is recommended for use in any medium friction application, including the most severe.

CHARACTERISTICS

- Excellent wear rate
- Non-abrasive
- Premium life characteristics
- High corrosion resistance

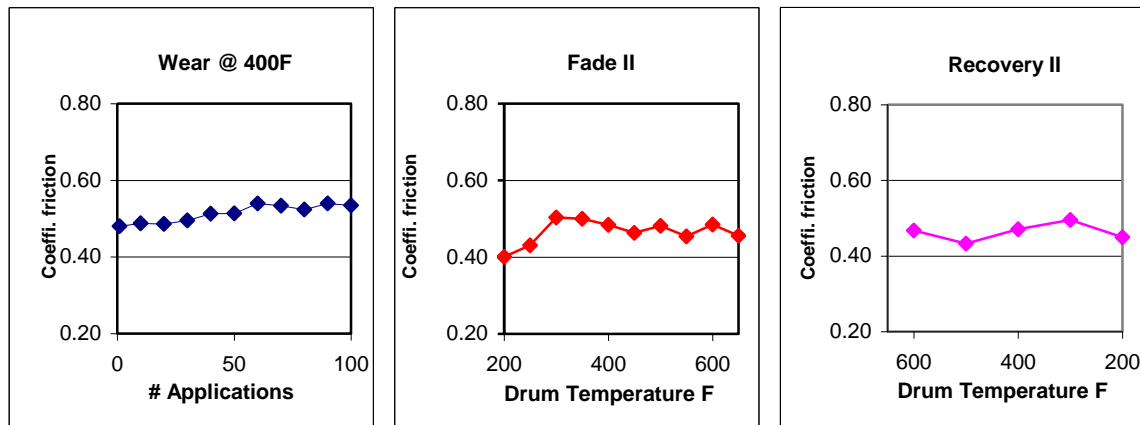
MECHANICAL PROPERTIES

Specific Gravity (SAE J380) : 2.40
 Gogan Hardness (SAE J379A) : 10
 Tensile Strength, PSI (ASTM D638) : 2100

FRICITIONAL PROPERTIES

Coefficient of Friction (SAE J661):
 Normal* : 0.44
 Hot* : 0.47
 Wear Rate (SAE J661)
 (inch³/hp-hr)* : 0.004
 Friction Code : FG
 Maximum Operating Limits:
 Rubbing Speed** : 7500 fpm
 Pressure** : 2000 psi
 Drum Temperature for
 Constant Operation** : 550°F

SAE J661A TEST CURVES



The information presented in this datasheet provides general performance characteristics of the friction material compound under standard test conditions. Values shown are typical or represent average values from test samples. Friction material performance is application specific due to the geometry and conditions of the application, please use this as reference information only. No warranty can be made as to the suitability of this friction material for a specific application. For support with an application, please contact us to discuss your requirements.

* Friction values shown are for guideline purposes only. Friction values will change with temperature, pressure and speed. Practical design considerations should include a factor of safety based on the specific application.

** Maximum operating limits stated are interrelated. Changing any one value will change the maximum limit of the others.