



## Product Data Sheet: RF 43

### PRODUCT DESCRIPTION:

RF 43 is a rigid molded *Non-Asbestos, Metallic, graphitic* friction material suitable for use in *Medium Friction* brake/clutch applications in a wide variety of equipments. RF 43 is non-corrosive, smooth, non-abrasive and keeps the interface temperatures down on brakes. It can be molded into wide range of shapes and sizes to satisfy virtually all industrial applications.

### CHARACTERISTICS

- High compressibility
- Uniform friction
- Excellent fade & recovery
- Excellent wear rate

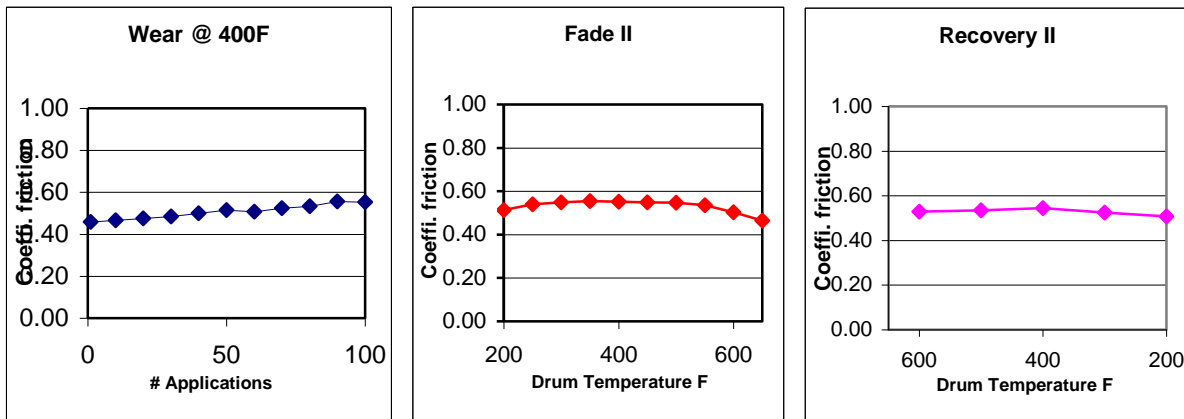
### MECHANICAL PROPERTIES

Specific Gravity (SAE J380)	: 1.70
Shore Hardness (SAE J379A)	: 45-55
Tensile Strength (ASTM D638)	: 2464 PSI

### FRICITIONAL PROPERTIES

<b>Coefficient of Friction (SAE J661):</b>	
Normal*	: 0.54
Hot*	: 0.51
<b>Wear Rate (SAE J661)</b>	
(inch <sup>3</sup> /hp-hr)	: 0.003
Friction Code	: GG
<b>Maximum Operating Limits:</b>	
Rubbing Speed**	: 7500 fpm
Pressure**	: 2000 psi
<b>Drum Temperature for</b>	
Constant Operation**	: 500°F

### SAE J661A TEST CURVES



Calibri The information presented in this datasheet provides general performance characteristics of the friction material compound under standard test conditions. Values shown are typical or represent average values from test samples. Friction material performance is application specific due to the geometry and conditions of the application, please use this as reference information only. No warranty can be made as to the suitability of this friction material for a specific application. For support with an application, please contact us to discuss your requirements.

\* Friction values shown are for guideline purposes only. Friction values will change with temperature, pressure and speed. Practical design considerations should include a factor of safety based on the specific application.

\*\* Maximum operating limits stated are interrelated. Changing any one value will change the maximum limit of the others.