



# Product Data Sheet: WCB 002

## PRODUCT DESCRIPTION

WCB 002 is a rigid molded *Non-Asbestos, Graphitic* material suitable for use in *Low Friction* brake/clutch for industrial friction applications. WCB 002 is non-corrosive, smooth, non-abrasive and keeps the interface temperatures down on brakes. It can be molded into wide range of shapes and sizes to satisfy virtually all industrial applications.

## CHARACTERISTICS

- Exceptional dimensional stability
- Extremely low noise operation
- Excellent Fade and Recovery
- High tensile strength

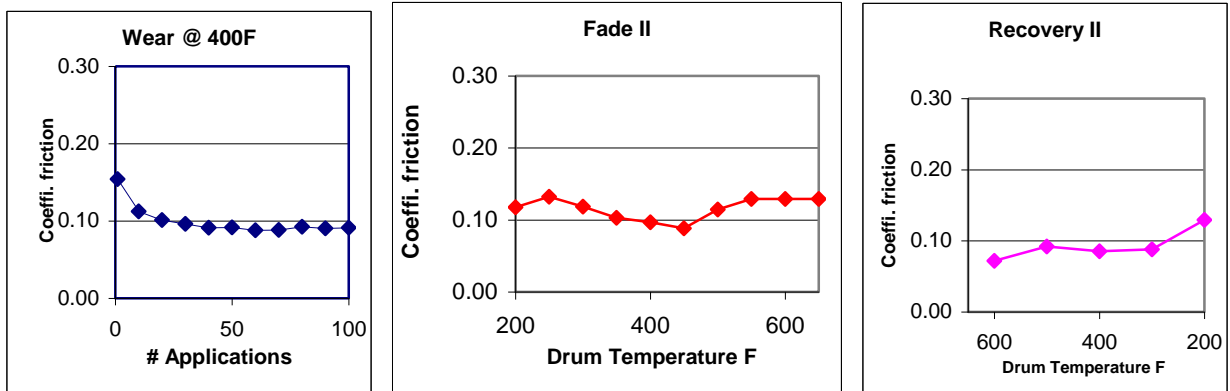
## MECHANICAL PROPERTIES

Specific Gravity (SAE J380) : 1.54  
 Shore Hardness (ASTM D2240) : 74-80  
 Tensile Strength, PSI (ASTM D638) : 2238

## FRICITIONAL PROPERTIES

Coefficient of Friction (SAE J661):  
 Normal\* : 0.12  
 Hot\* : 0.10  
 Wear Rate (SAE J661)  
 (inch<sup>3</sup>/hp-hr) : 0.005  
 Friction Code : CC  
 Maximum Operating Limits:  
 Rubbing Speed\*\* : 6000 fpm  
 Pressure\*\* : 2000 psi  
 Drum Temperature for  
 Constant Operation\*\* : 400°F

## SAE J661A TEST CURVES



The information presented in this datasheet provides general performance characteristics of the friction material compound under standard test conditions. Values shown are typical or represent average values from test samples. Friction material performance is application specific due to the geometry and conditions of the application, please use this as reference information only. No warranty can be made as to the suitability of this friction material for a specific application. For support with an application, please contact us to discuss your requirements.

\* Friction values shown are for guideline purposes only. Friction values will change with temperature, pressure and speed. Practical design considerations should include a factor of safety based on the specific application.

\*\* Maximum operating limits stated are interrelated. Changing any one value will change the maximum limit of the others.